

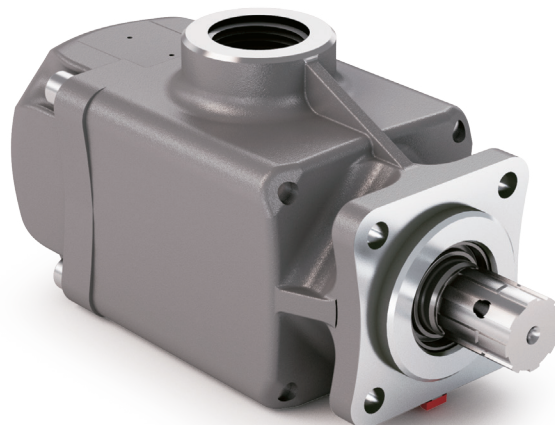
DIN 5462 SE

CODICE DI ORDINAZIONE / ORDERING CODE

201 PE XXX Z SE

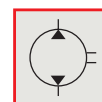
TIPO / TYPE
 POMPA A PISTONI / PISTON PUMP

CILINDRATA / DISPLACEMENT
 VERSIONE / VERSION
 DIN 5462 SE

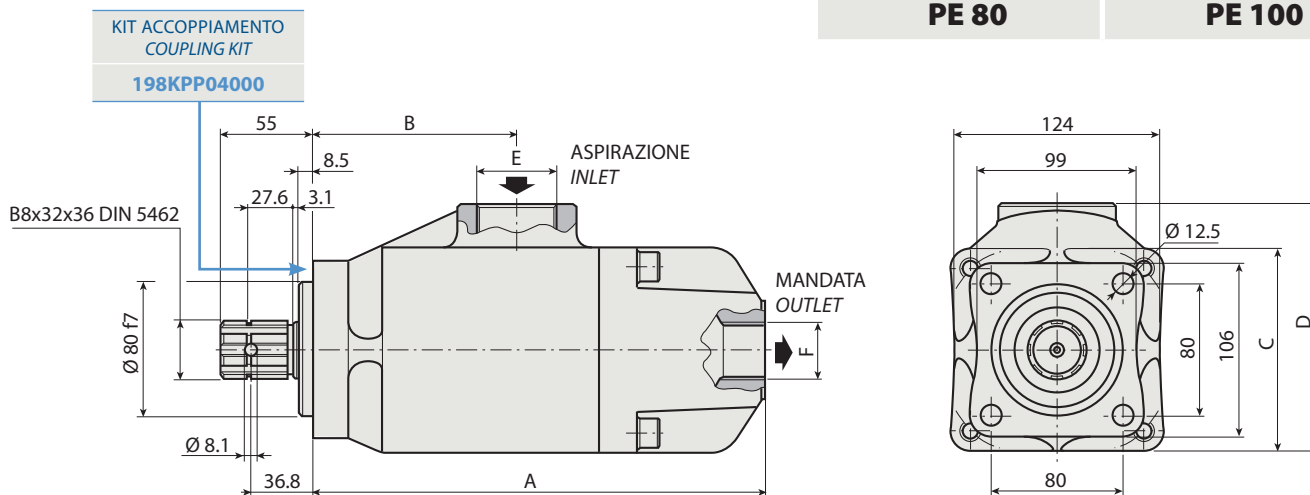


2

BIDIREZIONALE
BI-ROTATIONAL



PE 70	PE 90
PE 80	PE 100



CARATTERISTICHE E DATI TECNICI / SPECIFICATIONS AND TECHNICAL DATA

TIPO TYPE	CODICE CODE	CILINDRATA DISPLACEMENT cm ³ /rev.	A mm	B mm	C mm	D mm	E ASPIRAZIONE INLET	F MANDATA OUTLET	PESO WEIGHT kg
PE 70	201PE070ZSE	70	272	122.5	124	150.5	1" ½ G	1" G	17.5
PE 80	201PE080ZSE	80							
PE 90	201PE090ZSE	90							
PE 100	201PE100ZSE	100							

Per la scelta dei raccordi orientabili vedi pag. 212-213 / For the selection of adjustable fittings see page 212-213

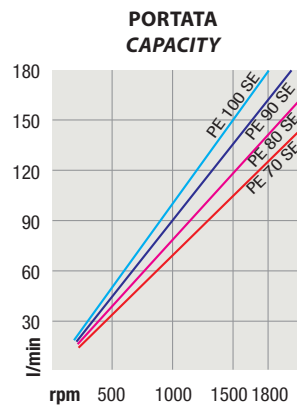
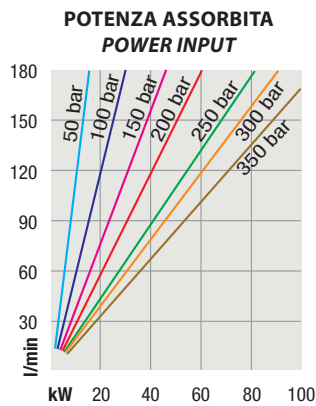
- A richiesta possono essere fornite le pompe a pistoni con le guarnizioni HNBR per climi freddi (-40 °C).
- On request our piston pumps may be supplied with HNBR seals for cold climates (-40 °C).

DIN 5462 SE

TIPO / TYPE			PE 70	PE 80	PE 90	PE 100	
Cilindrata <i>Displacement</i>	Vg	cm ³ /n cm ³ /rev.	70	80	90	100	
Pressione massima continua <i>Max continuous operating pressure</i>	P1		300	300	300	300	
Pressione massima intermittente <i>Max intermittent operating pressure</i>	(max 30 s)	P2	bar	350	350	350	350
Pressione massima di picco <i>Max peak pressure</i>	(≤ 0.1 s)	P3		400	400	400	400
Velocità massima intermittente <i>Max intermittent speed</i>	(P ≤ 20 bar)	n3		2000	2000	2000	2000
Velocità massima continua <i>Max continuous speed</i>	(≤ P1)	n1	n/min r.p.m.	1600	1600	1600	1600
Velocità minima intermittente <i>Min intermittent speed</i>	(≤ P2 x 0.5) (max 30 s)	n4		400	400	400	400

2

DIAGRAMMI / DIAGRAMS



RILIEVI ESEGUITI CON OLIO ISO VG 46 A 50° C ($\nu = 30$ cSt)
 THE ABOVE SPECIFICATIONS REFER TO OIL TYPE ISO VG 46 AT 50° C ($\nu = 30$ cSt)